



Installation Manual

Table of Contents

1. Installing Cast-control.....	2
1.1 System Requirements Overview	2
1.1.1 Supported Operating Systems.....	2
1.1.2 Webserver Configuration	2
1.1.3 Disk Space.....	2
1.1.4 PHP Configuration	2
1.1.5 MySQL Configuration	3
1.1.7 3 rd Party Control Panel Information	3
1.2 Prerequisites.....	4
1.2.1 IIS 6+	4
1.2.2 XAMPP (Apache, PHP, MySQL, FileZilla).....	4
1.3 Ioncube Installation.....	4
1.3.1 Download & Install	4
1.4 RRDTOOL Installation	4
1.5 Installation.....	5
1.5.1 Uploading & Extracting.....	5
1.5.2 GUI Installation.....	5
1.5.3 Crucial Settings	5
1.5.4 Scheduled Tasks	6
2. Installing Additional Features.....	9
2.1 SMS Sending / Receiving Features	9
2.1.1 Overview	9
2.1.2 SMS Configuration.....	9
2.1.3 Supported Gateways	9
2.1.4 Usage Documentation.....	9
2.2 MSN Messenger Service.....	10
2.2.1 Requirements	10
2.2.2 Configuration.....	10
2.2.3 Troubleshooting	10



1. Installing Cast-control

1.1 System Requirements Overview

1.1.1 Supported Operating Systems

While Cast-Control will function fine on most operating systems, the following is a list of all officially supported, tested and recommended operating systems:

- Linux (Most Distributions supporting the LibC6 kernel)
- FreeBSD 4 & 5 (6 will work with the FreeBSD 5 compatibility libraries)
- Windows (2003, XP Professional, Vista Ultimate)
- Mac OS X

Cast-Control requires the following software to be pre-installed and specified; we can also install and configure the software as required for a small service fee at <http://www.cast-control.net/>

We also require that your server have at least ONE **static IP address** for licensing.

1.1.2 Webserver Configuration

Most web servers will function perfectly with cast-control but we especially recommend apache which is available for most operating systems. We have noted that on windows installations IIS requires very strict permissions and policy changes to be made for PHP to access the cmd.exe as to start and control shoutcast instances. In these cases we highly recommend configuring XAMPP.

1.1.3 Disk Space

Cast-Control uses minimal disk space and in fact the software itself including loncube encoders and shoutcast executables is approximately 10MB. Additional space may be required for customers using the [AutoDJ](#) features and this is to be determined by the hosting provider.

1.1.4 PHP Configuration

The following modules & extensions are the bare minimum that cast-control requires to function:

- PHP Sessions
- PHP MySQL Extensions
- PHP FTP Extensions
- PHP GD 2 Extensions
- PHP PCRE
- PHP XML Extensions



The following settings are required to run cast-control in an optimal environment:

- PHP Version 4.3.0 or newer
- [PHP Ioncube Encoders](#)
- PHP Safe Mode Disabled
- PHP GD Extensions
- PHP Functions: `exec()`, `system()`, `shell_exec()`
- PHP `magic_quotes_runtime` [Off](#)
- PHP `register_globals` [Off](#)
- PHP `allow_url_fopen` [On](#)
- PHP `allow_short_tags` [On](#)

1.1.5 MySQL Configuration

- Version 4.0.1.6 or newer
- Strict mode [Disabled](#)

If a condition above is not met, you may experience issues with some features throughout the control panel. PHP Safe Mode can be tweaked to operate with cast-control but this user manual does not cover these specifics.

1.1.6 Network / DNS Configuration

In order for our licensing system to function correctly, it is required that your system be able to connect to www.cast-control.net (Primary License Server within AU) or www.cast-hosting.com (Secondary License Server within Chicago). License files not requiring a connection to our servers are valid for a maximum period of 3 months are available to clients that have been with us for 6 months or more and may incur additional fees. No exceptions can be made to this policy!

1.1.7 3rd Party Control Panel Information

Cast-Control does not discriminate between any other control panels that may be installed on your system and will also work fine without any other control panels.

Please take note of the Supplement Control Panel documentation for specific installation instructions for certain control panels.

The following is a list of Control panels that are known to be compatible with cast-control in order of our customer's preference:

- cPanel 10 & 11
- Plesk
- DirectAdmin
- InterWorx
- IxAdmin
- WebMin



1.2 Prerequisites

In most cases you can install the prerequisite software with a single command assuming a package manager such as YUM or APT has been installed.

1.2.1 IIS 6+

With IIS6, 7 or above it is important to run the virtual directory or website as “administrator” or “system” as cast-control requires elevated privileges to cmd.exe, taskkill.exe, tasklist.exe through PHP. All other settings should be fine.

1.2.2 XAMPP (Apache, PHP, MySQL, FileZilla)

The default settings for xampp are usually ample however additional PHP extensions should be uncommented from the php.ini (as specified in requirements).

1.3 Ioncube Installation

The Cast-Control Panel is encoded with Ioncube PHP Encoder, this software protects our source code as well as speeding up the processing time of PHP of in some cases up to 60%.

Please note it is very important to ensure you select the correct operating system or the encoder will not function.

1.3.1 Download & Install

In most cases the ioncube loader is automatically installed at run-time, if this is not the case and you receive ioncube errors than please download encoders for your system from

<http://www.ioncube.com/loaders.php>

Installation instructions are available at http://www.ioncube.com/loader_installation.php

1.4 RRDTOOL Installation

Download and extract this file: <http://www.gknw.net/mirror/rrdtool/rrdtool-1.2.30-bin-w32.zip>

Move the directory **rrdtool/** to your hard disk, preferably **c:/rrdtool/**

Copy the 2 font files from **c:/rrdtool/** into **c:/windows/fonts/** to install the rrdtool fonts.

That is it!



1.5 Installation

1.5.1 Uploading & Extracting

- a) Login to http://www.cast-control.net/billing/client_area.php
- b) Navigate to "View your licenses", find your license and select "View and Download".
- c) Download the latest STABLE release for your operating system and make sure it is NOT a Cluster version, this is something different.
- d) Extract the files to your web directory, if using xampp this would be "htdocs/"

1.5.2 GUI Installation

1. Navigate to the URL that you have uploaded cast-control too.
2. As prompted, enter the appropriate license key – this is found in the cast-control client area. If you are unsure of your key, please [contact us](#).
3. Cast-Control will now check permissions on important files; the files should already be readable and writable and in most cases there is nothing to do here.
4. Cast-Control will now automatically attempt to start a shoutcast process on the port you specified in the first step. If this is unsuccessful, you will be advised on how to correct the issue.

If you still have difficulty, make sure there are no shoutcast processes running on your system and try again. Finally try restarting the installation with a different port.

1.5.3 Crucial Settings

You will now be prompted to enter critical details for use with cast-control panel, it is important to ensure these are accurate.

The Path to RRDtools as installed earlier should be the following, unless you have specifically install this somewhere. **Make sure you specify rrdtool.exe and not just the path.**

```
C:/rrdtool/rrdtool.exe
```

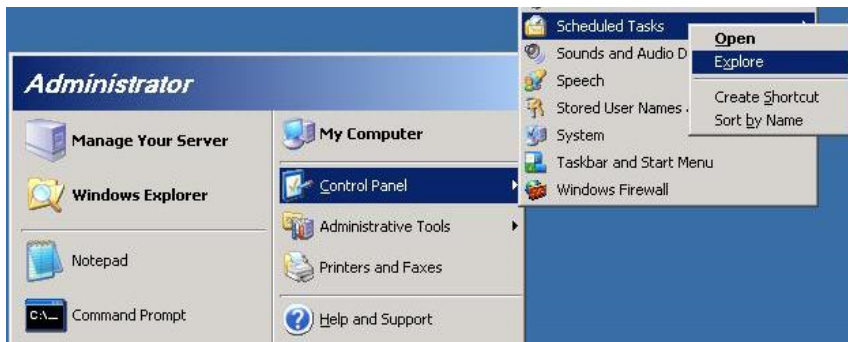


1.5.4 Scheduled Tasks

The scheduled tasks are most important as they control the shoutcast process starting and stopping among many other critical system tasks.

If you are using Plesk then do not create the scheduled tasks through the control panel as it will not work as expected.

1. Open the Scheduled Tasks folder as described in the following image:



2. Click "Add a new scheduled Task"

This will open the scheduled tasks wizard, click next.

On the next step you will be prompted to select an application, scroll down if necessary and select "Command Prompt". Click Next and where requested to enter a task name enter "CastQ Queue=1" which describes the purpose of this individual task.

Click next, ignore the Start time on this page and click next once again.

Enter "NT AUTHORITY\SYSTEM" or simply "SYSTEM" for the username field and leave Password BLANK. It is important to use the system account rather than a user account for permissions.

On the final page, select "Open Advanced Properties when i click finish" and click "Finish".



3. In the "**Run**" field you will need to enter three main items as well as the task command, the following items should be replaced with their associated paths:

{PHP} = Path to PHP, example: c:/PHP/php-cli.exe

{PHPINI} = Path to PHP.ini, for example: c:/windows/php.ini

{CAST} = Path to the root of cast-control, example: c:/Inetpub/wwwroot/

Please note it is important the above are correct, otherwise this will NOT work.

Now that you have these values, you will need to enter the following into the run field replacing as implied above:

{PHP} -c {PHPINI} {CAST}/scanner/cron.php queue=1

For example, ours would look like:

C:/PHP/php-cli.exe -c c:/WINDOWS/php.ini c:/Inetpub/wwwroot/scanner/cron.php queue=1

It is often best to test this out in the command prompt so you can be assured it WILL work, so open Start -> Run and type cmd.exe.

Once the command prompt window is open, enter the exact line you just entered into the scheduled task and hit enter.

If all went well, you should see something like the following:

```
Binded $_C['queue'] as 1
Script will loop 1 times

Loop #1
Processing Queue

Checking Reseller Transfer Limits
Complete!

Reading Playlist Schedule

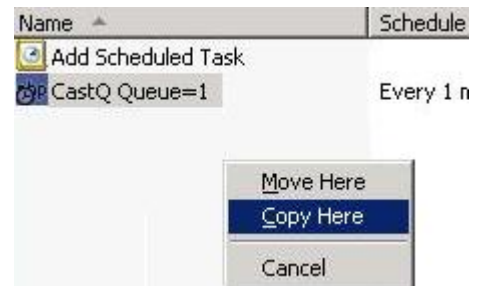
Complete!
Script Execution Completed
```



4. Select the Schedule Tab

- Make sure "Daily" is selected
- Set "Schedule Task Daily" to "Every 1 Days"
- Click Advanced
- Tick "Repeat Task" and enter "Every 1 Minutes"
- Set Duration to 24 hours
- Click OK twice to save and close the scheduled task.

5. Create 2 copies of the Scheduled task as depicted in the following image:



6. Rename the first copied task to "CastQ bitrate=1 logfiles=1 palyedsongs=1"

- Right Click this task and select "Properties"
- Modify the Run field and replace "queue=1" with "bitrate=1 logfiles=1 palyedsongs=1"
- Select "Schedule" and click "Advanced"
- Change Every 1 Minutes to Every 5 Minutes
- OK twice to save and close the schedule

7. Rename the second copied task to "CastQ playedsongs=1 mailplayedsongs=1"

- Right Click this task and select "Properties"
- Modify the Run field and replace "queue=1" with "playedsongs=1 mailplayedsongs=1"
- Select "Schedule" and click "Advanced"
- Untick "Repeat Task"
- Set the Start Time to 12:01AM
- OK twice to save and close the schedule

8. Your scheduled tasks should now look similar to the following image:

Name	Schedule	Next Run Time	Last Run Time
Add Scheduled Task			
CastQ Queue=1	Every 1 minute(s) from 12:33...	12:54:00 AM ...	12:53:00 AM ...
CastQ Bitrate=1 Logfiles=1 playedsongs=1	Every 5 minute(s) from 12:33...	12:58:00 AM ...	12:56:00 AM ...
CastQ playedsongs=1 mailplayedsongs=1	At 12:00 AM every day, star...	12:00:00 AM ...	12:52:00 AM ...



2. Installing Additional Features

2.1 SMS Sending / Receiving Features

2.1.1 Overview

The SMS Modules allow you to both send and receive messages through Cast-Control. It is possible to configure SMS events alongside the standard email event templates.

The Modules can also be used to control purchased services by starting, stopping, restarting shoutcast & AutoDJ services or updating passwords, scheduling playlists ect.

2.1.2 SMS Configuration

There are currently four options with the SMS configuration which are explained here.

Gateway:

Select your preferred gateway, it is best to select a gateway that deals closest with your country as not all gateways will provide premium international access. For example, txtlocal.co.uk have a premium link with mobile connections in the UK while only a standard link for most international locations. This means that numbers that have been either created or changed in the last 6-12 months might not be available.

Use Secure Socket:

This functionality creates a secure socket to your provider, most providers will support this functionality and this is recommended.

Service Control:

Allow customers to send commands to the number to control their shoutcast & autodj services. The notification URL should be set to <http://yourdomain.com/panel/castcontrol/receivesms.php>. See the configuration documentation specific to your gateway for more information.

Reply:

Send a confirmation to authorised numbers that send a command to the sms service control. Please note that if your gateway charges per message, this will incur the standard fee PER MESSAGE.

2.1.3 Supported Gateways

[UK - www.txtlocal.co.uk](http://www.txtlocal.co.uk)

2.1.4 Usage Documentation

<http://cast-control.net/docs/?documentId=137>



2.2 MSN Messenger Service

2.2.1 Requirements

The following PHP Extensions are required to run the messenger control service.

- Curl, Curlwrappers
- Mhash
- Mcrypt
- Bcmath
- OpenSSL, urLSSL
- SOAP
- Ports 1863 and 443 are also required to be open, both are required to establish secure communications with the messenger service.

2.2.2 Configuration

1. Login to Cast-Control
2. Navigate to Administration -> Configuration -> Messenger
3. Configure your Messenger login details

Messenger Service Control: Select Enabled.

MSN Email: Enter the newly created messenger account email

MSN Password: Enter the newly created messenger account password

Alias: This is the Display name of the Messenger Bot

Personal Message: This is the Personal Message that is displayed

4. Click "Save Configuration"
5. Select the Messenger tab yet again than select "Click here to save and restart the Messenger Service "

The Messenger service should now start within the next 5 minutes, if it still does not start than you should follow the Troubleshooting options below.

2.2.3 Troubleshooting

Please Note: All items in blue should be replaced with their actual values.

1. Login to your SSH terminal.
2. Run the following which will display any errors that arise, make sure to replace the path with your actual path.

[/usr/bin/php /path/to/cast-control/scanner/msnbot.php](#)

If there are connectivity problems, please ensure the ports listed in the requirements are accessible.



2.3 Google Listener Maps

Please Note: The GeoLiteCity.dat.gz is a free binary database provided by MaxMind and is not as accurate as the commercial database. You can purchase the commercial version from <http://www.maxmind.com/app/city>

1. Register a Google API Key from <http://code.google.com/apis/maps/signup.html>

2. Windows GeolP

Download and extract the latest [GeolPCity Database](#)

Create a new directory under C:/ called **CastControl** and copy the GeoLiteCity.dat file into this directory.

3. Login to Cast-Control, Navigate to Administration -> Configuration and select GeolP

4. Select 'Enabled' and enter your google API Key.

5. Navigate to Server Management -> Select a server and now select GeolP.